

A Case Study Of  
Glendale Glenridge Clubhouse,  
Powai, Mumbai

August To October 2011

All of the timber is procured from North American mills and fabricated on the job site in India. In this picture the wall panels (some weighing up to 25 tons) are being fabricated.





All the wall panels for a 9,000 sq. Ft. Clubhouse were fabricated on site in just 9 days.

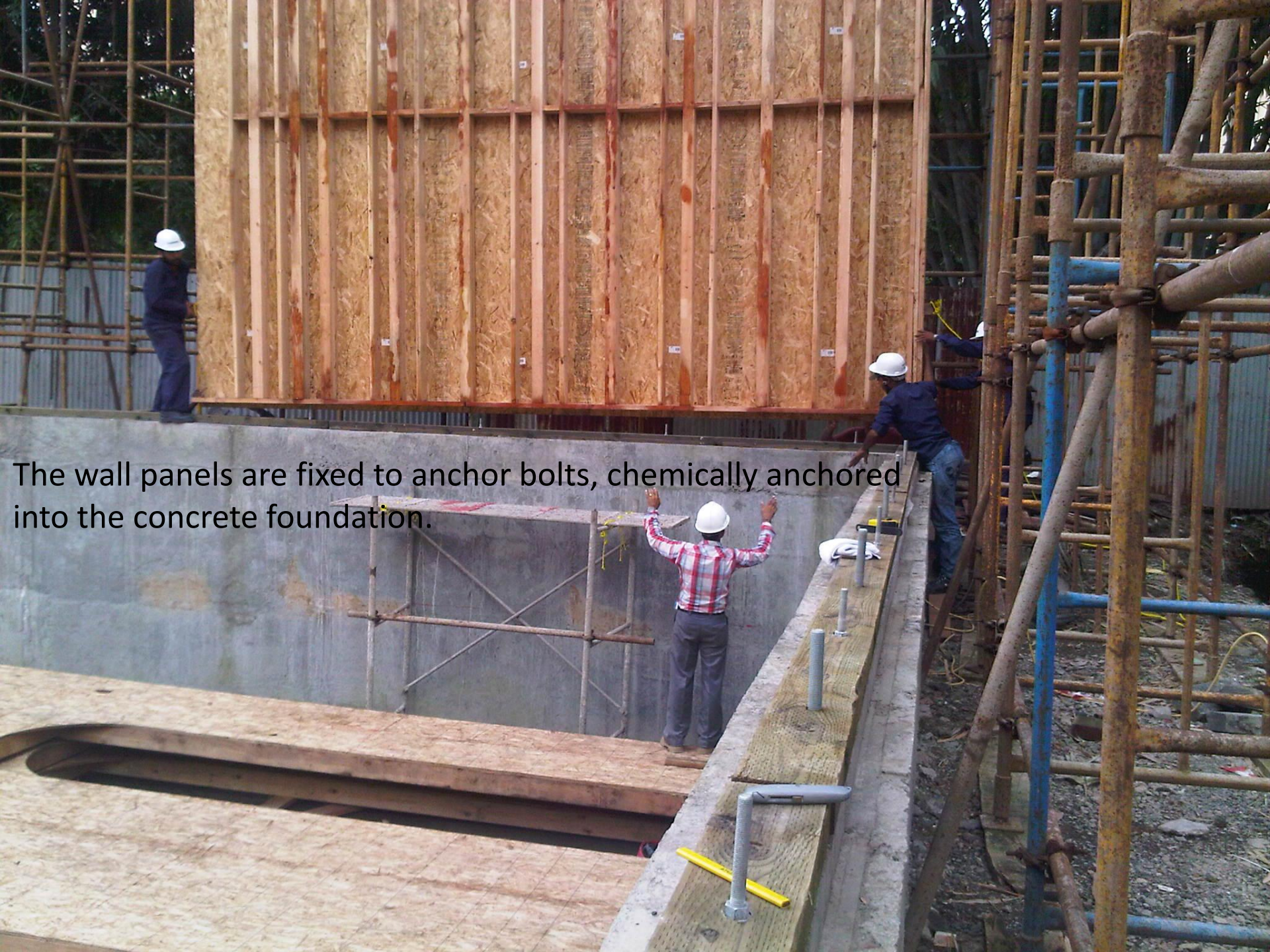






The roof trusses (some clear spanning 62 feet)  
were fabricated in 4 days.





The wall panels are fixed to anchor bolts, chemically anchored into the concrete foundation.



All of the wall panels for this 9,000 sq. Ft. Clubhouse were lifted into position in just one day.







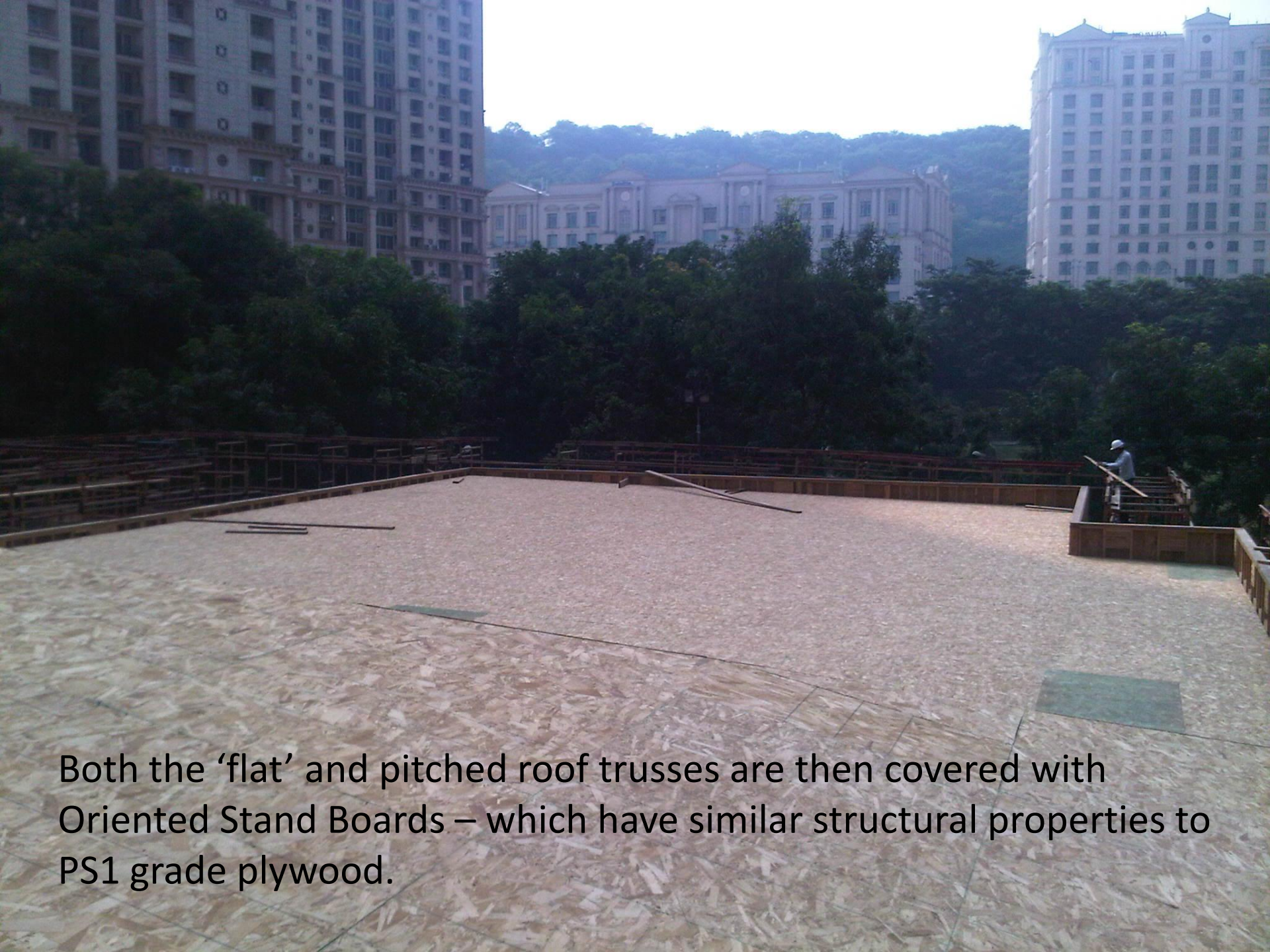
A view of the pitched roof trusses being lifted into position.



A view of the 'flat' roof trusses in position.







Both the 'flat' and pitched roof trusses are then covered with Oriented Strand Boards – which have similar structural properties to PS1 grade plywood.



The roofs are then covered with a bitumen primer...







...then covered with a self-adhesive waterproof membrane.



A view of services running through the trusses.

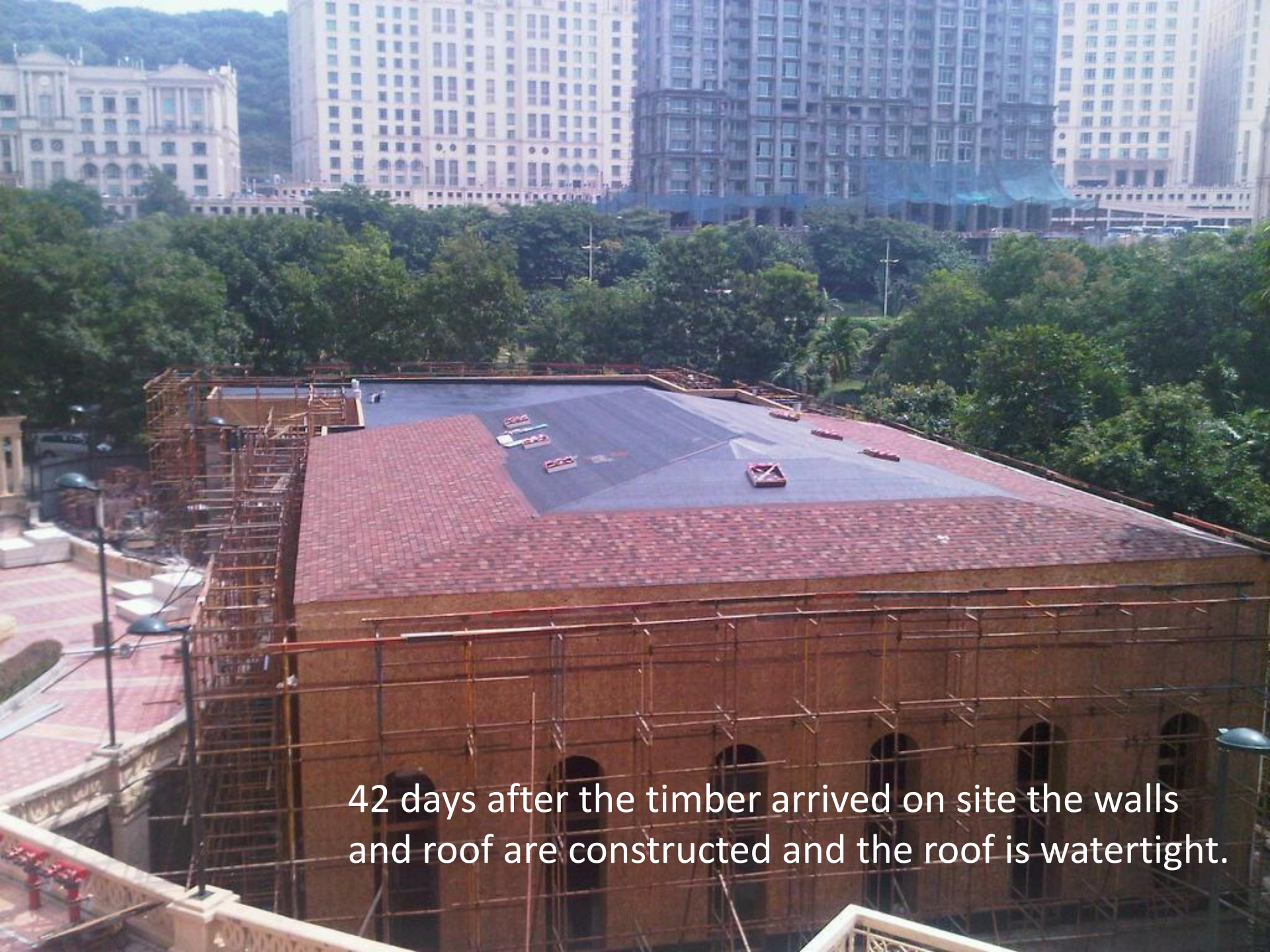






A view of the electrical conduit in the walls prior to insulation being installed.





42 days after the timber arrived on site the walls and roof are constructed and the roof is watertight.






The finished clubhouse. Total construction time – 92 days.





An interior view of the squash courts.



A wide-angle interior shot of a large, empty badminton court. The room has white walls and a light-colored floor. On the left wall, there are three tall, narrow, arched windows. The ceiling is white with a large, multi-bladed industrial fan in the center and a long, dark track with several rectangular light fixtures running across it. In the lower-left foreground, two people are standing and talking. In the background, near a doorway, another person is visible. A dark door is also visible on the right wall.

A interior view of the badminton court.





A interior view of the main corridor.